

**simplylinked**

**AUTOMATE YOUR  
TONER REPLENISHMENT  
PROCESS**



# Fulfil supplies as part of our solution...

SimplyLinked allows for EDI (Electronic Data Interchange) connectivity between Data Direct's ERP system and the Service Management System used by the ordering dealer. Compatible with Vantage Online, Copy Control, Select, e-Automate and our own "SimplyService Management programme" software.

## Improve logistics & reduce costs...

Data Direct continues to develop its support programmes and now collaborates with Asolvi, ECI, Copy Control and Select Computer Systems, enabling users to integrate with Data Direct's SimplyLinked programme. This integration automates and speeds up the whole toner replenishment and consumable and parts ordering process whilst allowing the resellers to benefit from Data Direct's greater buying power to reduce toner cost, whether OEM or compatible.

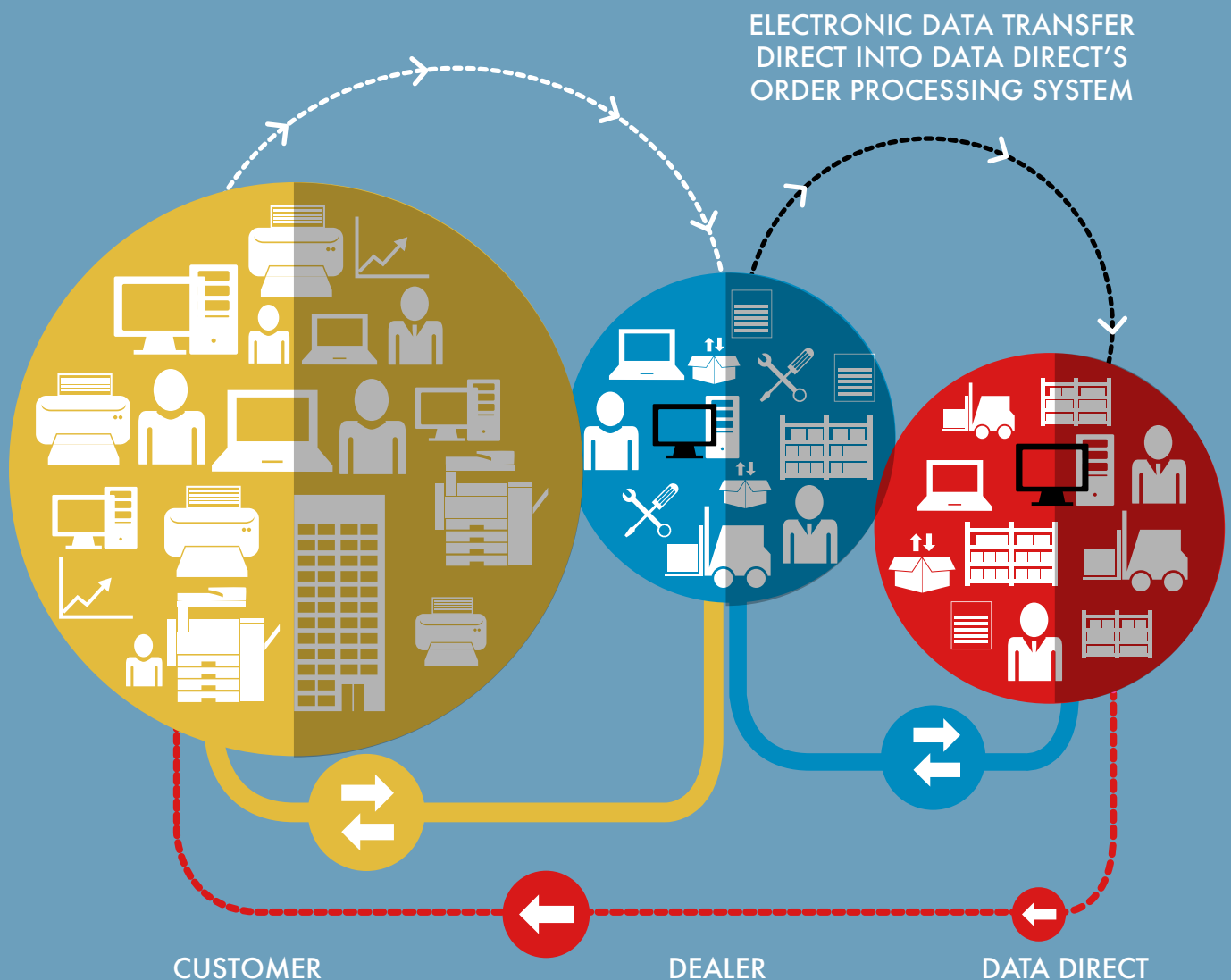


# Enhance your customers after sales experience...

The automated process enables improved efficiency, accurate information transfer and correct end-user delivery details to be relayed. Significantly, it reduces unnecessary time logging into websites, creating manual orders and associating orders to service calls and customer deliveries.



# Simplify automations with an EDI connection...



**simplylinked**

## **Contact Us**

### **Group Head Office**

11 Ivanhoe Road,  
Finchampstead,  
Berkshire  
RG40 4QQ  
[www.data-direct.co.uk](http://www.data-direct.co.uk)  
[info@data-direct.co.uk](mailto:info@data-direct.co.uk)  
01189 734 564

### **Northern Office**

The New Barn, Home Farm Ind Est,  
The Avenue,  
Esholt  
Shipley  
BD17 7RH  
[www.data-direct.co.uk](http://www.data-direct.co.uk)  
[info@data-direct.co.uk](mailto:info@data-direct.co.uk)  
01189 734 564

